

DCI **EDGE**



DCI **EDGE** SERIES 4 OPERATORY EQUIPMENT



dhpsupply.com | 800.626.2163

Our values, **OUR STORY**

PORTLAND OREGON, 1982

John and Janelle Spencer had a dream to start their own business. They knew that they had the discipline, drive, and passion to create a successful company and give back to their community. What began with a small home loan, an idea for a syringe, and a makeshift office in their living room grew into a global parts giant.

1983

COMPANY BEGINNINGS

DCI is founded by John & Janelle Spencer.

1991

NEW DELIVERY SYSTEM

DCI designs its first world acclaimed dental system.

1993

GLOBAL GROWTH

DCI becomes largest dental parts manufacturer in the world.

1997-
2005

EXPANSION

DCI expands through the acquisition of Pelton & Crane and Marus, building them into the second largest dental company in the US. Companies are sold in 2005.

2016

INTRODUCING DCI EDGE

DCI returns to the Equipment market with the introduction of the new Series 5 Operator Package.

2018

NEW PRODUCT INNOVATION

DCI continues to expand its dental offering with the introduction of a full cabinetry and orthodontic line.

CRAFTED WITH DECADES OF EXPERIENCE

With the help of their children, Jason and Amy, the Spencers continue to change the face of dental with continuous innovation, remarkable expansion and a dedication to the highest standards. To this day, they remain true to their core value, making their customers lives easier.

"Sometimes all it takes is an idea and a passion to change the course of your life and career."

DCI *EDGE*



West Coast Headquarters

DCI first opened its doors in Newberg, Oregon, the heart of dental equipment manufacturing in America. Over 350 employees are part of the DCI family which has proudly served the dental industry for over 37 years.



East Coast Headquarters

In 2018, DCI opened an additional 40,000 sq ft cabinet manufacturing facility in Charlotte North Carolina. Equipped with state of the art CNC machinery, DCI manufactures cabinets on both coasts.



Blending **STYLE AND VALUE**

EASY POSITIONING

Dual articulating headrest facilitates quick repositioning.



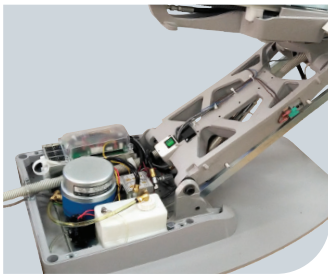
FOLDOUT ARMRESTS

Armrest rotation facilitates easy entry and exit of patients.



HEAVY-DUTY CONSTRUCTION

High quality steel and aluminum castings stand the test of time. Fully hydraulic lift and back mechanisms for high powered weight support.



PATIENT COMFORT

Thin, narrow back design provides comfortable, ergonomic access to the oral cavity while comfortably supporting the patient



ERGOBACK PLUSH



ERGOBACK ASEPSIS



NARROW BACK PLUSH



NARROW BACK ASEPSIS



**DUAL ARTICULATING
HEADREST**



PONYTAIL HEADREST



V HEADREST

BUILT TO LAST

SWING MOUNT DELIVERY SYSTEM

Delivery system and light easily convert from left to right handed operation for true ergonomic positioning.





POST MOUNT DELIVERY SYSTEM

The post mount delivery system features an integrated vacuum trap, water system, optional cuspidor as well as air and water quick connects.



OPTIONAL CHAIR CONTROL TOUCHPAD

Reliable **INSIDE & OUT**

LOW MAINTENANCE

Simple design with high quality components improve reliability and ease of service.



CUSPIDOR

Durable metal construction with porcelain bowl.

REAR ASSISTANT'S PACKAGE

Mounts to rear of chair, for flexible positioning.



TELESCOPING ASSISTANT'S PACKAGE

Featuring the most reliable, ergonomic syringes and vacuum valves on the market.

SERIES 4 CART

Sturdy metal frame on adjustable cart base comes standard with DCI self-contained water system and junction box with utility center.



HYGIENE DELIVERY SYSTEM

Integrated vacuum lines provide a sleek, modern look. Available in multiple configurations.

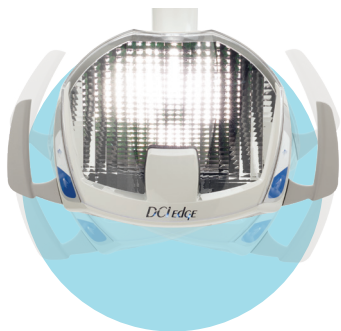


OPERATORY SUPPORT CART

Featuring a durable laminate top and high quality assistant's instrumentation. Available with optional storage organizer.



Reflective **LED TECHNOLOGY**



ADVANCED FEATURES

3rd axis rotation for improved positioning.
Dual membrane integrated touch controls allow
for easy access and control of three intensity
settings of 17,500, 26,000 and 35,000 lux.



DURABLE DESIGN

DCI's heavy-duty metal structure and handle
design along with high quality components
demonstrate a strong commitment to building
the highest quality dental equipment.



**TRACK
MOUNT LIGHT**



POST MOUNT LIGHT





**CEILING
MOUNT LIGHT**



WALL MOUNT LIGHT
(Cabinet mount also available)

UNIFORM LIGHT PATTERN

DCI delivers cutting edge illumination technology by utilizing over 500 reflective facets to bounce light back to the oral cavity. The result is a uniform light pattern that virtually eliminates shadowing and increases visibility for doctors and dental assistants.

WHY DCI EDGE?

For over 35 years, DCI has been there when our customers need us. We innovate and manufacture our products based on quality, reliability, & affordability. We deliver quality dental cabinetry that is built to last.



HIGH QUALITY

Using the best components and premium high pressure laminate, our cabinets are designed, cut, assembled & inspected at our state-of-the-art facilities in Newberg, OR & Charlotte, NC.



RELIABLE

Installed by trained service technicians, all cabinetry carries a 5 year warranty. Modular design, metal subbases and fusion edgebanding ensure a lifetime of use.



AFFORDABLE

Cabinets are offered at contractor level pricing, with the additional perk of being serialized. Not only does that give you valuable tax savings, it is peace of mind that your cabinetry was crafted for use in your practice.

Series 4 **CABINETS**

EASILY INTEGRATE ACCESSORIES

Easily integrate technology with your dental cabinetry. Add a CPU to upper or lower modules. Include a nitrous cutout to your utility chase. Add a tapmaster to any side cabinet or center island for a handsfree sink.

PERFECT SIZE FOR ANY OPERATORY

12 o'clock's are available in 42" or 36" wide, wall mounted or pass through free standing. Side Cabinets available from 31" up to 64" long. Center Islands available with modules for as delivery units or storage, with optional X-ray storage.





CHOOSE YOUR DELIVERY

Mobile, fixed, and slide out doctor and assistant units mount seamlessly into any 12 o'clock cabinet. Side delivery units tuck cleanly out of the way in side and center island cabinets.

CLEAN AND ORGANIZED

Multiple drawer and door configurations help keep clinical items readily accessible during treatments. Extra Storage space and multiple waste options keep your operatory tidy.



Designed for Dental **CONSTRUCTION YOU CAN COUNT ON**

Made with a structural steel sub base,
high pressure premium laminate
and 1 mm Fusion edgebanding.
All DCI Edge cabinetry features
soft close doors and drawers.





dhpsupply.com | 800.626.2163

FIND THE PERFECT COLOR

Over 85 designer choices

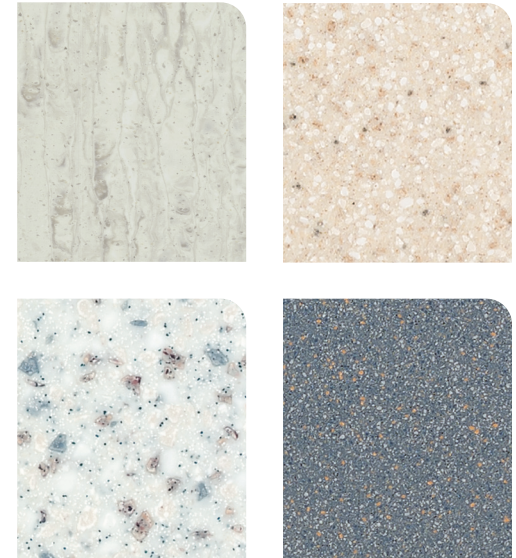
UPHOLSTERY



PREMIUM LAMINATES



SOLID SURFACE



For our full color selection and to order samples
visit us at www.dciedge.com/request-samples

